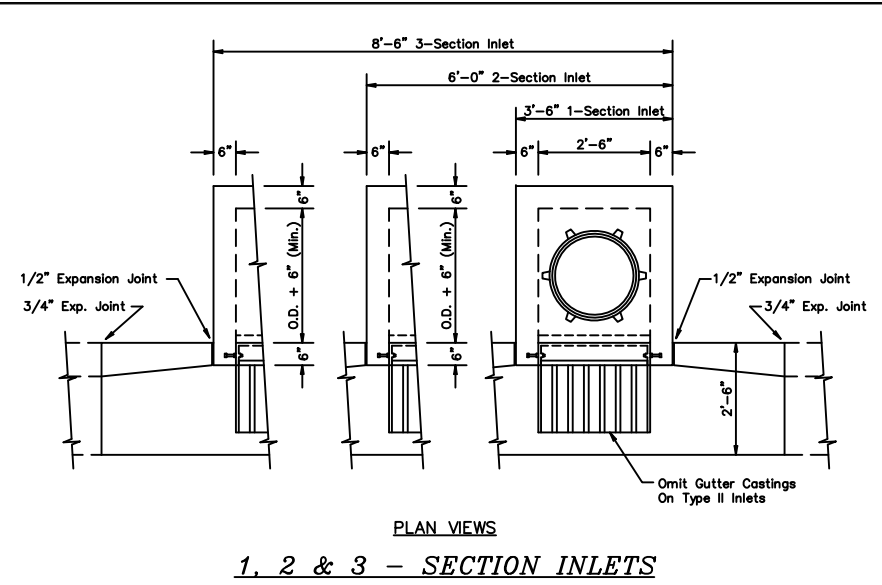
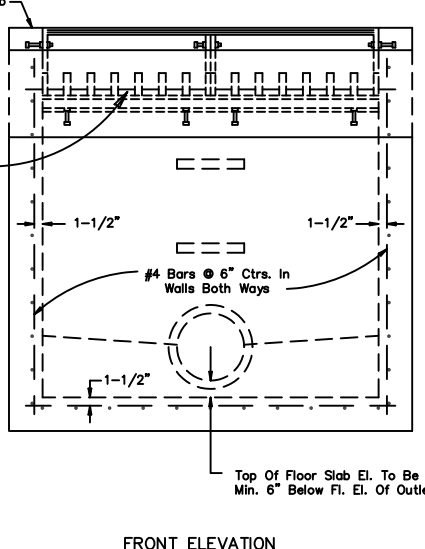
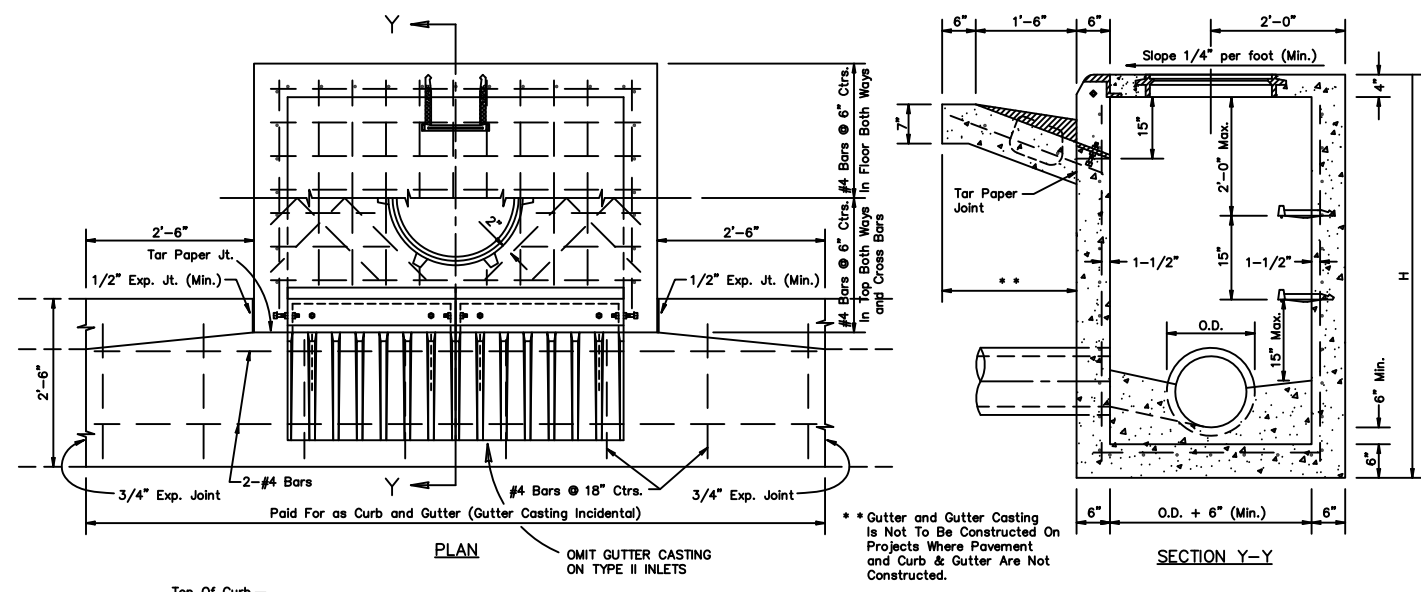
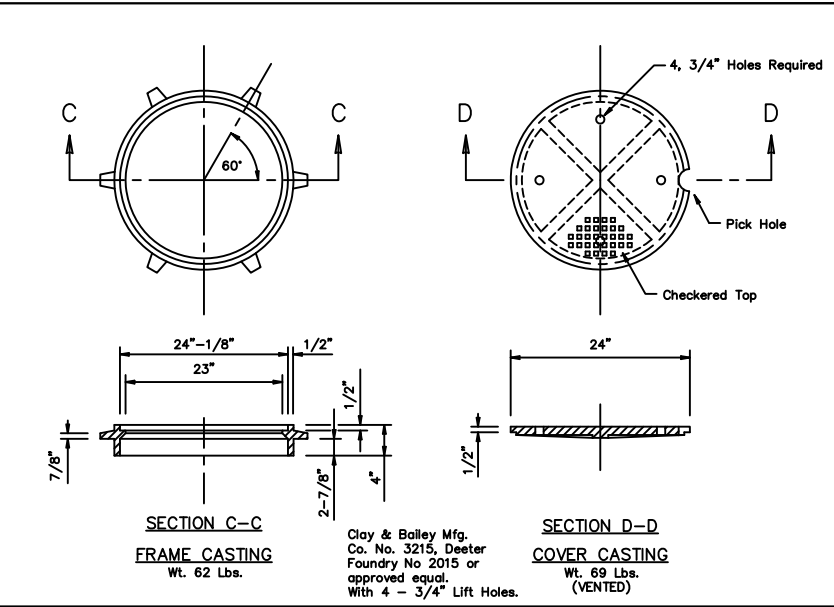
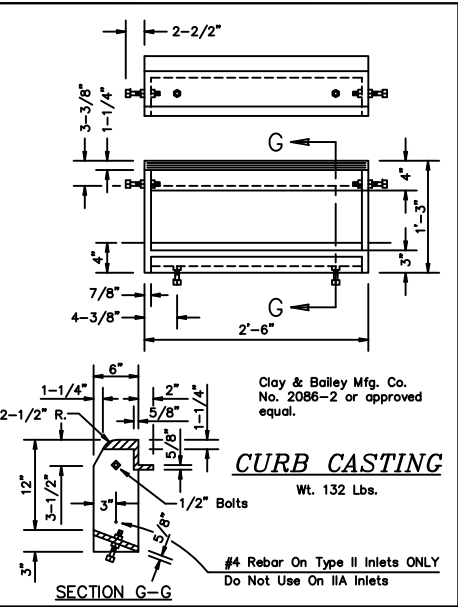


DEPRESSED GUTTER AT INLETS TYPE II & IIA



1, 2 & 3 - SECTION INLETS



TYPICAL INLET DETAILS

CASTING NOTES
All weights of casting are calculated weights with no allowances for fillets, overruns, anchor bars or bolts. Weights of cast iron as shown on this sheet are minimum, heavier weights of cast iron may be used. Minor variations of design will be permitted on casting if approved by engineer. All castings shall be gray iron and shall comply with A.S.T.M. A-48 Class 25B.

INLET CONSTRUCTION NOTES
Use Class "I" Concrete (AE) in reinforced sections. Bevel all exposed edges with a 3/4" triangular molding.

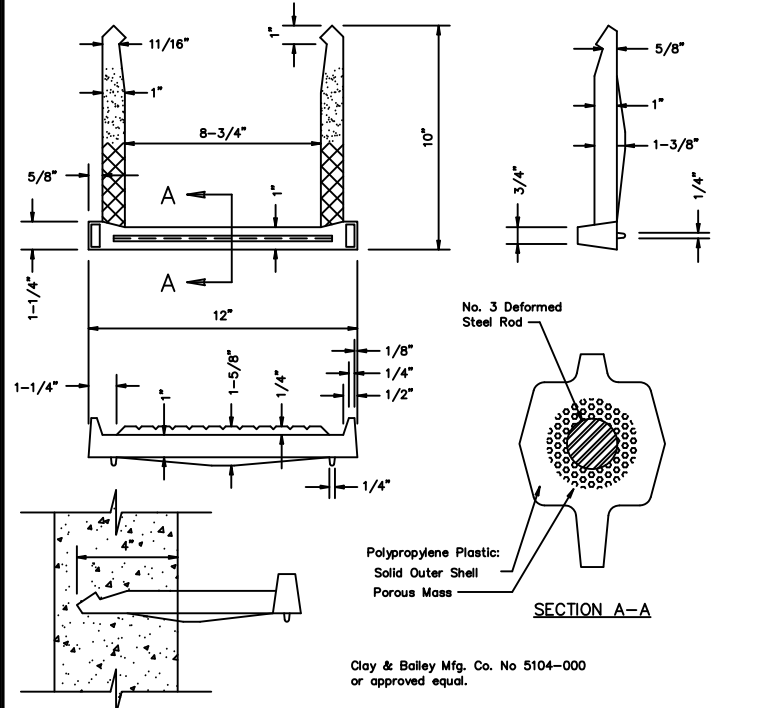
Bars to be bent around pipe. All reinforcing steel bars shall be Grade 40, deformed and shall conform to A.A.S.H.T.O. M 31-74.

Curb casting bolts shall be 1/2"x4-1/2" galvanized. On all castings grind burrs smooth, thoroughly clean, then apply shop coat of coal-tar enamel.

Steps shall be placed in back wall and will be installed in all inlets over 4' deep.

A small opening may be required in the back of the inlet to drain a low area, if ordered by the engineer. Reinforcing bars will extend through the opening. This will be considered as incidental work and not a separate pay item.

Floor of inlets shall be shaped as shown in various examples on "Manhole Standard Details For Storm Sewers", Standard Detail No. 7. Concrete used for shaping shall be unreinforced Class "II" Concrete.



NOTE:
Steps not to be used where "h" is less than 4 feet.

INSTALLATION:
Steps may be driven into wet concrete wall during manufacturing or set with expanding grout.

STEP DETAILS

1	11/98	CADD Update - Bretton Drafting Service	RDB	HMM
No.	Date	Revision	By	Approved

CITY OF HUTCHINSON, KANSAS
ENGINEERING DEPARTMENT

STANDARD DETAILS
for
TYPE II INLETS

STANDARD DATE: February, 1988 SHEET
DETAIL Drawn By: R.D.B. NUMBER
9 Approved By: H.H.M. of