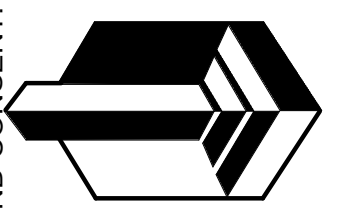
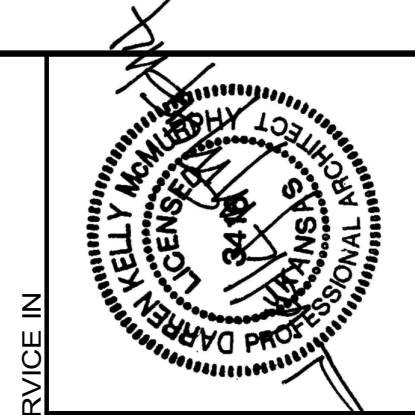
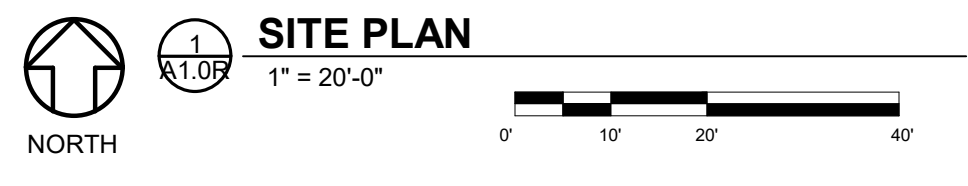
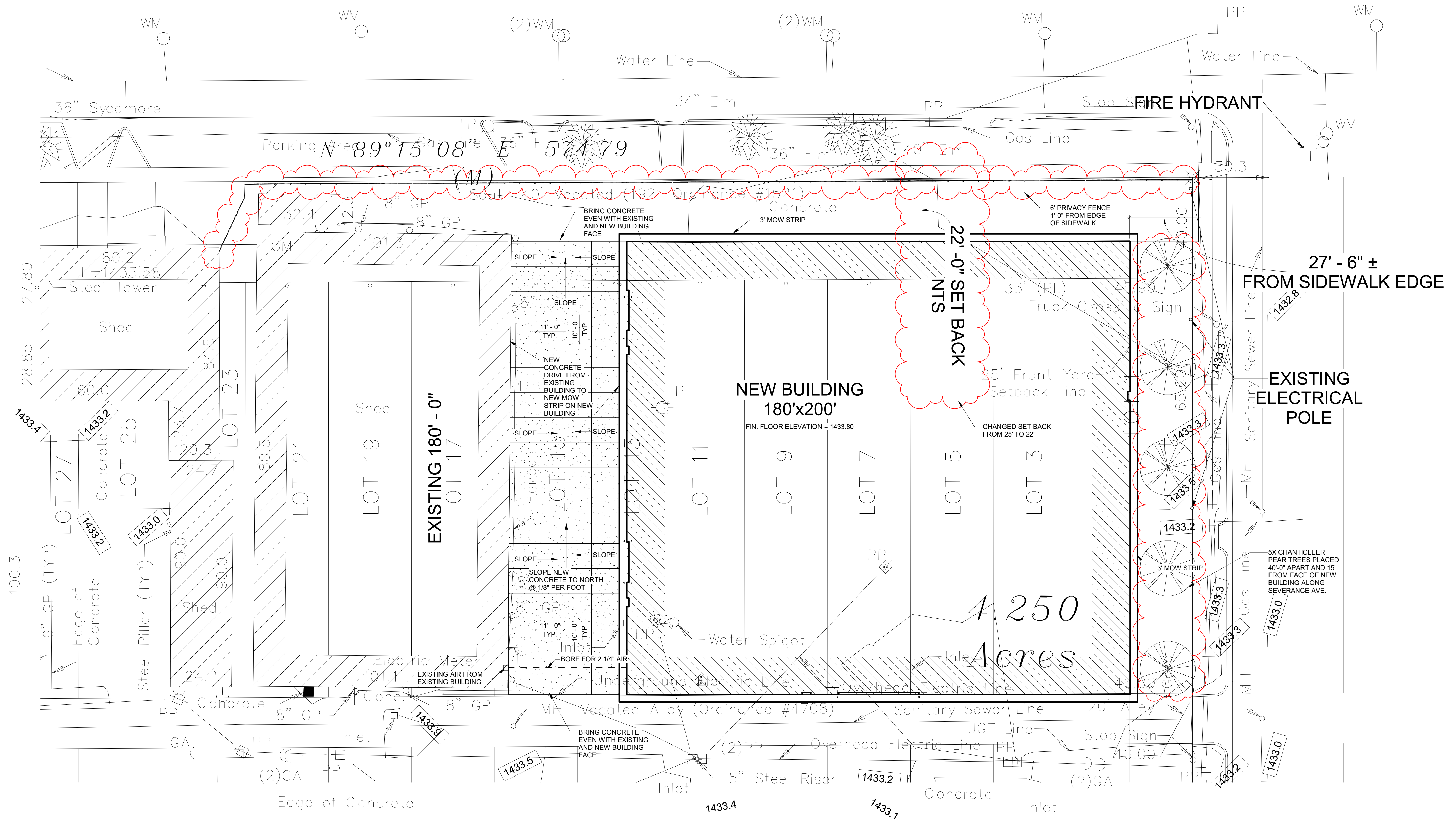


\\SERVER\p\specs\4\DRAWING\2019\6\DRAINAGE NEW CONSTRUCTION 2019\FINAL STAMPED DOCUMENTS\2019\6\DRAINAGE NEW CONSTRUCTION 2019\FINAL STAMPED.dwg
 3/19/2020 8:42:37 AM

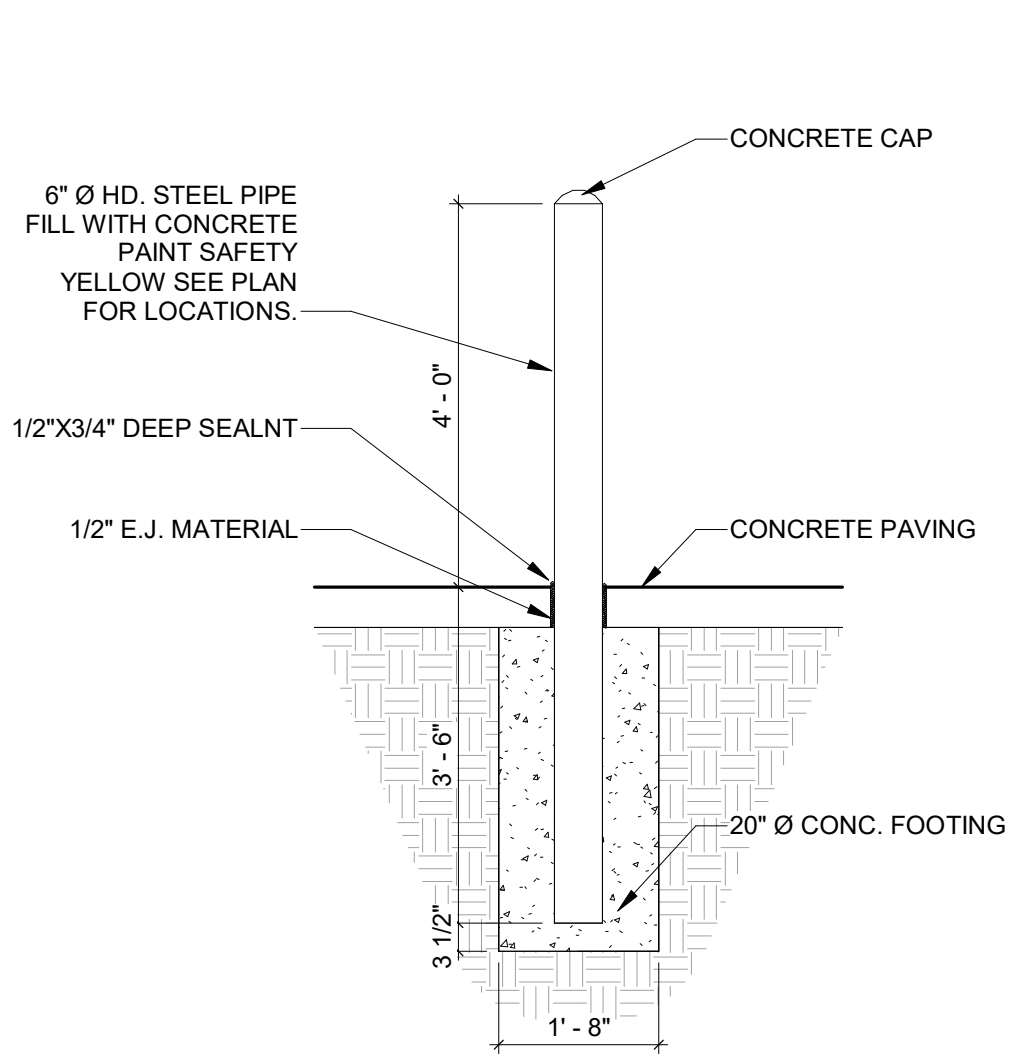


LANDMARK
 ARCHITECTS
 1020 NORTH MAIN, HUTCHINSON, KANSAS 67501
 620-663-5421 www.landmarkarchitects.net

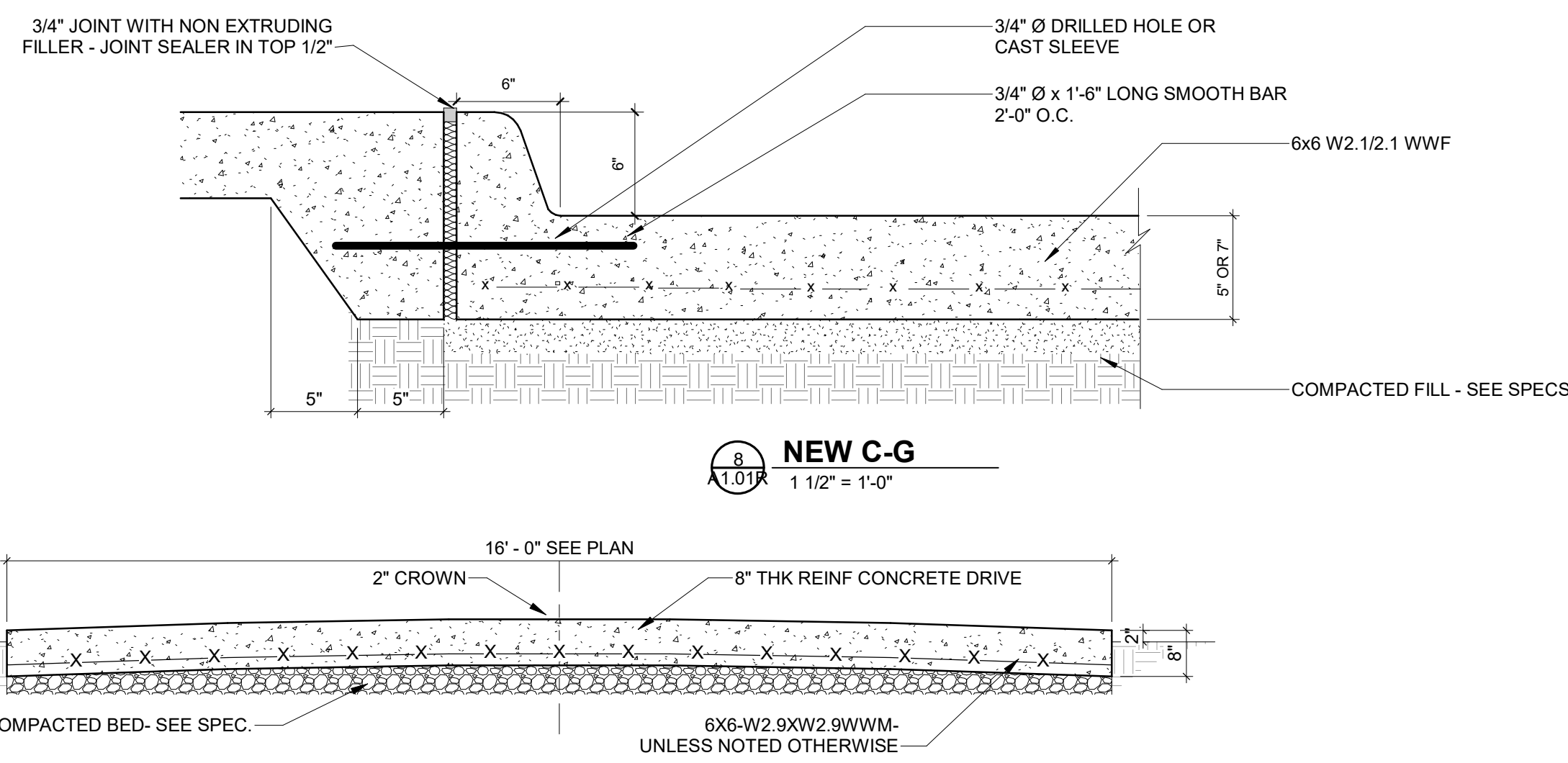
MANUFACTURING FACILITY
J&J DRAINAGE PRODUCTS CO.
110 N. PERSHING, HUTCHINSON, KANSAS 67504

LANDMARK ARCHITECTS HEREBY EXPRESSLY RESERVES ITS COMMON LAW COPYRIGHT AND OTHER PROPERTY RIGHTS TO THESE PLANS. THESE PLANS AND DRAWINGS ARE NOT TO BE REPRODUCED, CHANGED, COPIED NOR USED FOR SERVICE IN ANY FORM OR MANNER WITHOUT FIRST OBTAINING THE EXPRESS WRITTEN PERMISSION OF LANDMARK ARCHITECTS. NOR ARE THEY TO BE ASSIGNED TO ANY THIRD PARTY WITHOUT WRITTEN PERMISSION AND CONSENT.

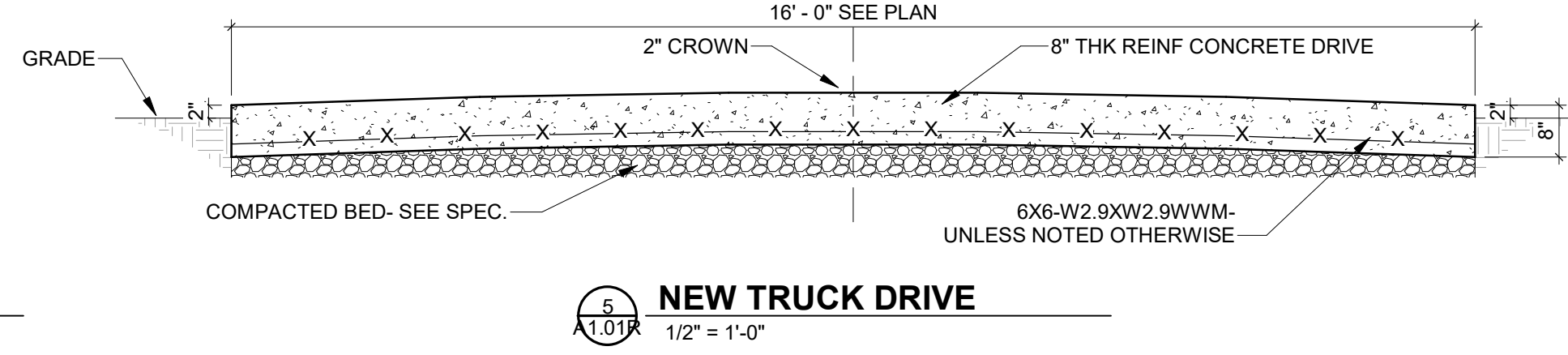
COMM. NO. :	2813-19
DRW BY :	KH, CY
UPDATED :	
ISS :	01/23/2020
SHT	A1.0R



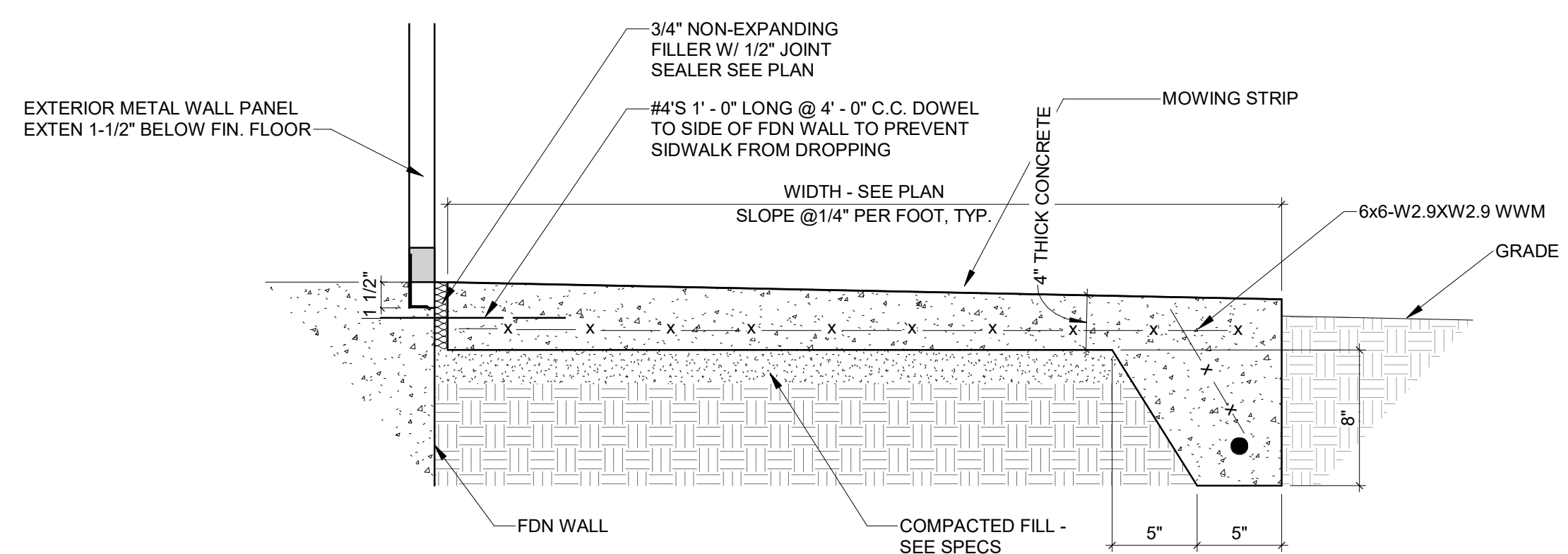
4 HEAVY DUTY PIPE BALLAD
1/2" = 1'-0"



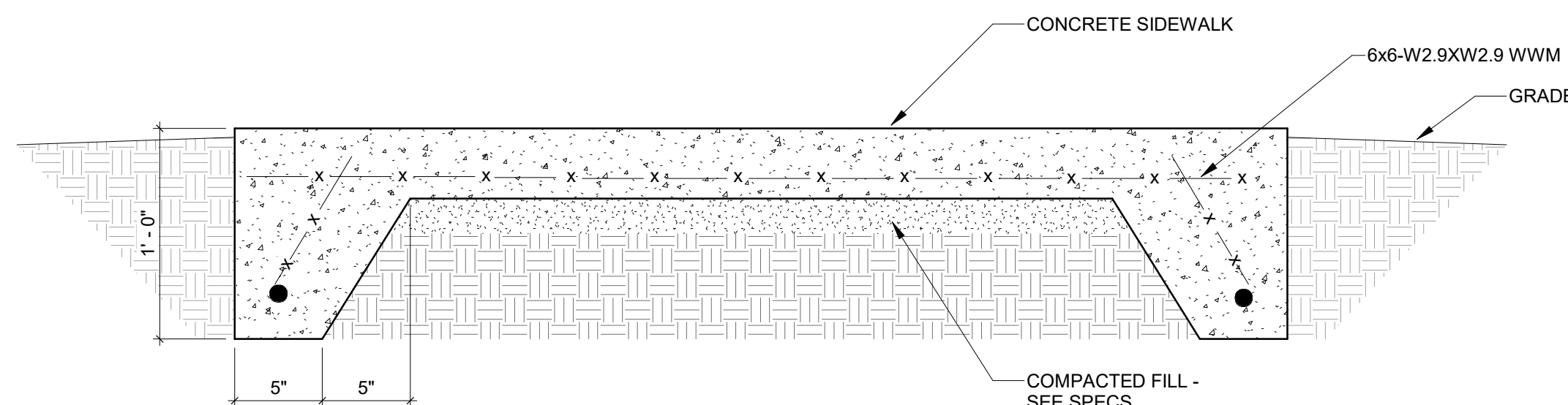
8 NEW C-G
1 1/2" = 1'-0"



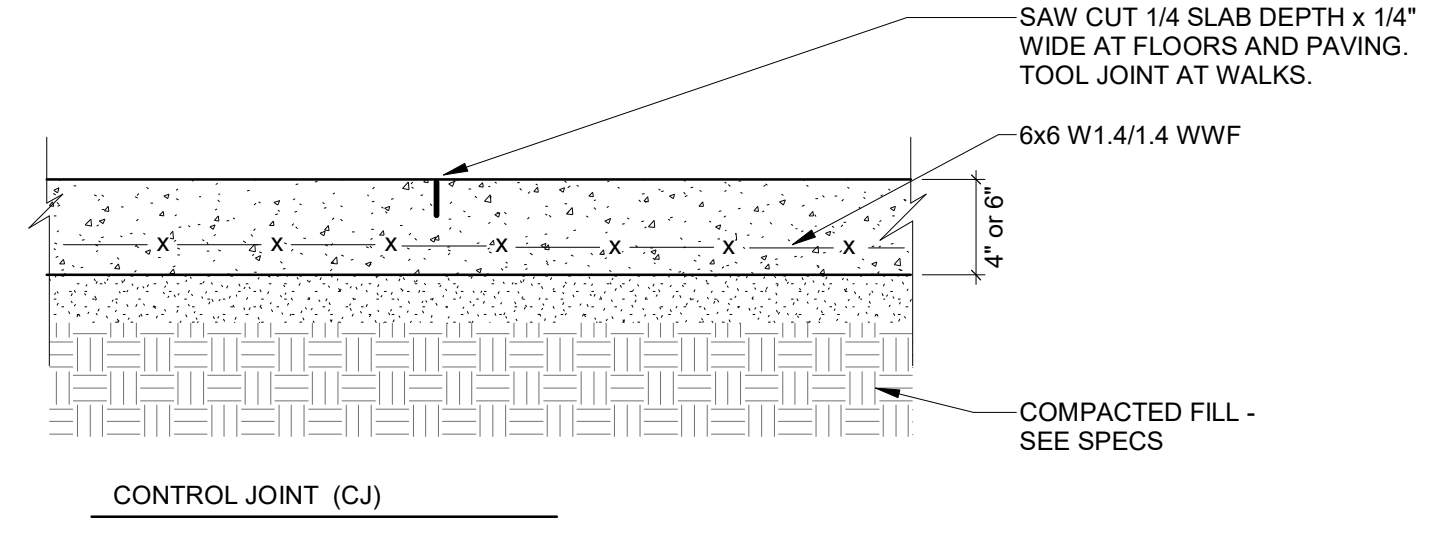
5 NEW TRUCK DRIVE
1/2" = 1'-0"



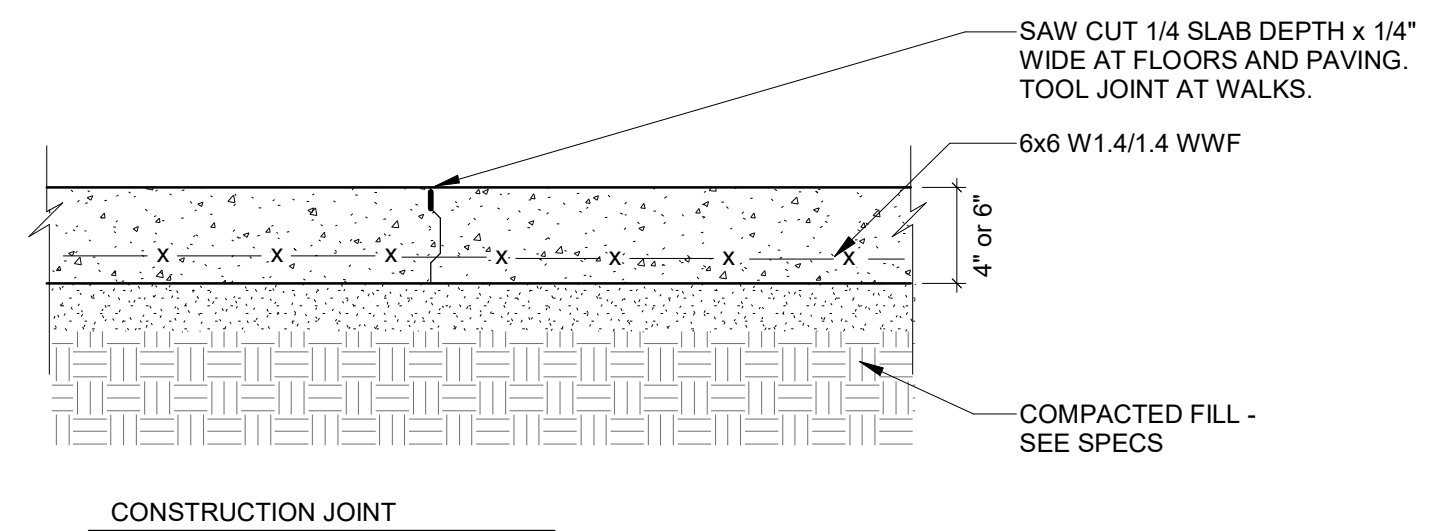
7 MOWING STRIP AT BUILDING
1 1/2" = 1'-0"



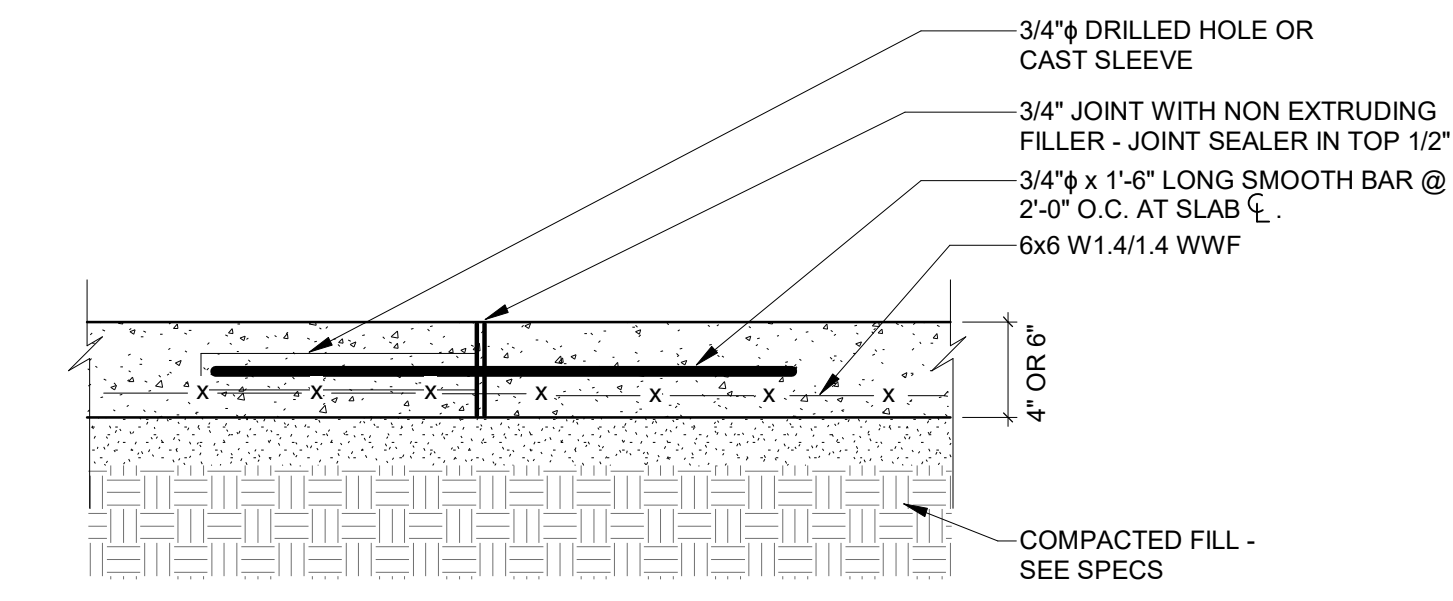
6 SIDEWALK DETAIL
1 1/2" = 1'-0"



CONTROL JOINT (CJ)

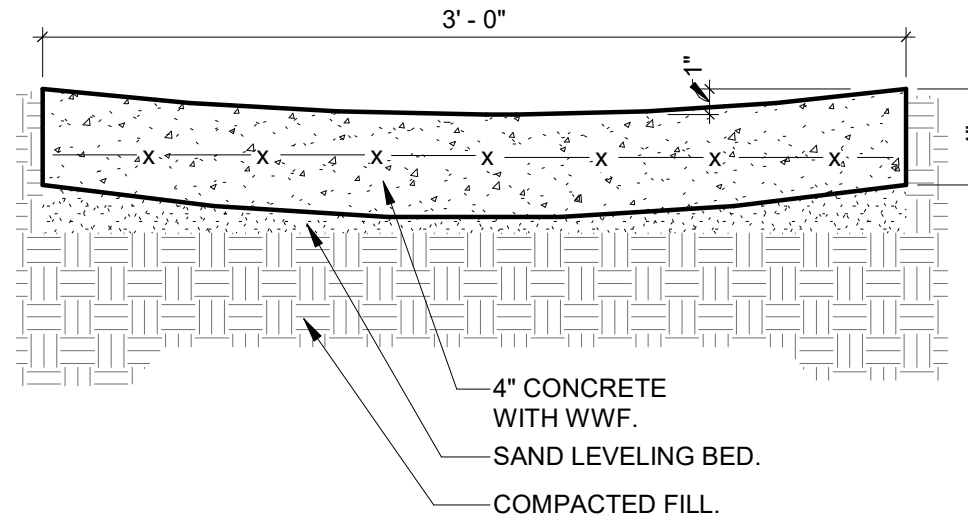


CONSTRUCTION JOINT

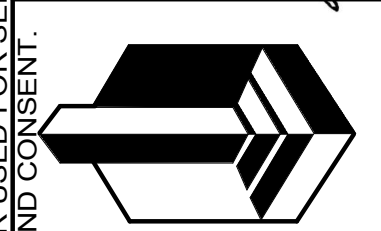
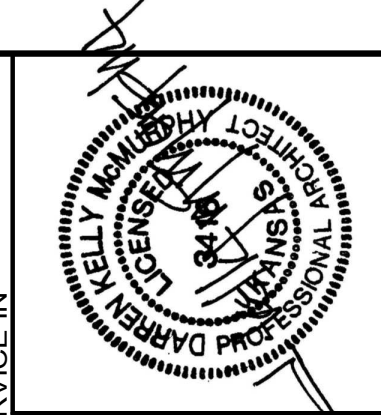


EXPANSION JOINT (EJ)
50'-0"± O.C.

1 TYPICAL CONCRETE JOINT DETAILS
1 1/2" = 1'-0"



3 CONCRETE SWALE
1 1/2" = 1'-0"



LANDMARK ARCHITECTS
1020 NORTH MAIN, HUTCHINSON, KANSAS 67501
620-663-5421 www.landmarkarchitects.net

MANUFACTURING FACILITY
J&J DRAINAGE PRODUCTS CO.
110 N. PERSHING, HUTCHINSON, KANSAS 67504

COMM. NO. :	2813-19
DRW BY :	JR, KH
UPDATED :	03/19/2020
ISS :	01/23/2020
SHT	A1.01R

\\S:\P\Projects\14 DRAINAGE\2019 & DRAINAGE NEW CONSTRUCTION 2813-19\FINAL STAMPS\DOCUMENTS\2019 & DRAINAGE NEW CONSTRUCTION 2813-19\FINAL STAMP.dwg
3/19/2020 8:42:33 AM

LANDMARK ARCHITECTS HEREBY EXPRESSLY RESERVES ITS COMMON LAW COPYRIGHT AND OTHER PROPERTY RIGHTS TO THESE PLANS. THESE PLANS AND DRAWINGS ARE NOT TO BE REPRODUCED, CHANGED, COPIED NOR USED FOR SERVICE IN ANY FORM OR MANNER WITHOUT FIRST OBTAINING THE EXPRESS WRITTEN PERMISSION OF LANDMARK ARCHITECTS. NOR ARE THEY TO BE ASSIGNED TO ANY THIRD PARTY WITHOUT FIRST OBTAINING WRITTEN PERMISSION AND CONSENT.