

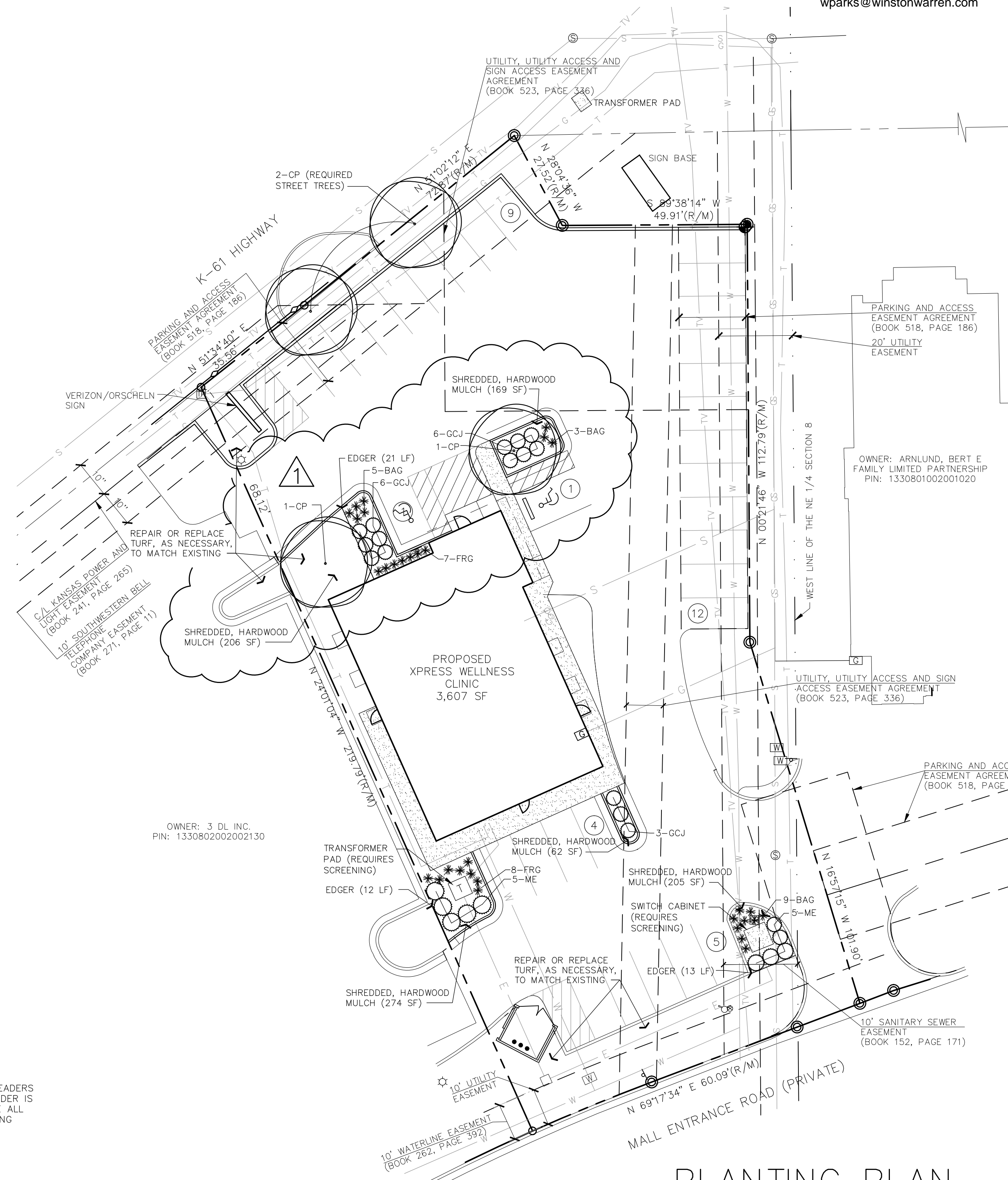
GENERAL PLANTING NOTES

- PRIOR TO BEGINNING ANY WORK ON THE SITE, THE CONTRACTOR SHALL CONTACT THE OFFICE OF THE OWNER AND THE ARCHITECT/LANDSCAPE ARCHITECT FOR SPECIFIC INSTRUCTIONS RELEVANT TO THE SEQUENCING OF WORK.
- LANDSCAPE CONTRACTOR SHALL PROVIDE ALL LABOR, MATERIALS AND SERVICE NECESSARY TO FURNISH AND INSTALL PLANTINGS AS SPECIFIED HEREIN AND AS SHOWN ON THESE PLANS.
- NO MATERIAL SUBSTITUTIONS SHALL BE MADE WITHOUT THE OWNER'S APPROVAL. ALTERNATE MATERIALS OF SIMILAR SIZE AND CHARACTER MAY BE CONSIDERED IF SPECIFIED PLANT MATERIALS CANNOT BE OBTAINED. LANDSCAPE ARCHITECT RESERVES THE RIGHT TO REVISE PLANT LIST AS DEEMED NECESSARY.
- ALL PLANT LOCATIONS ARE APPROXIMATE, ADJUST AS NECESSARY TO AVOID CONFLICTS.
- QUANTITIES OF MATERIALS SHOWN ON THE PLANTING PLAN TAKE PRECEDENCE OVER QUANTITIES SHOWN ON THE PLANT MATERIAL SCHEDULE. LANDSCAPE CONTRACTOR SHALL BE RESPONSIBLE FOR VERIFYING ALL QUANTITIES ON THE PLANTING PLAN.
- CONTRACTOR SHALL LOCATE ALL UTILITIES BEFORE WORK. LOCATE EXACT UTILITY LOCATIONS BY CONTACTING THE LOCAL UTILITY LOCATOR SERVICE. THE CONTRACTOR WILL BE RESPONSIBLE FOR THE REPAIR OF ANY DAMAGE HE MAY CAUSE TO UTILITIES.
- GENERAL CONTRACTOR SHALL PROVIDE 4" OF TOPSOIL AT ALL SOD AND PLANTING AREAS. GRADE SHALL BE ADJUSTED FOR SOD THICKNESS. ALL FINISH GRADING SHALL BE PERFORMED BY THE LANDSCAPE CONTRACTOR.
- SOD/SEED TYPE SHALL BE LOCALLY AVAILABLE TALL FESCUE BLEND OR OTHER TURF GRASS RECOMMENDED FOR THE SPECIFIC AREA.
- BACKFILL FOR PLANT EXCAVATIONS TO BE CLEAN NATURAL SOIL, EXCAVATED FROM PLANTING PITS MIXED WITH COMPOST AND WELL-ROTTED MANURE AT A RATIO OF THREE (3) PARTS SOIL TO ONE (1) PART COMPOST AND WELL-ROTTED MANURE.
- FERTILIZE ALL PLANTS WITH 6-10-4 COMMERCIAL FERTILIZER AS DIRECTED BY INSTRUCTIONS ON FERTILIZER.
- AFTER PLANTING IS COMPLETED, REPAIR INJURIES TO ALL PLANTS AS REQUIRED. LIMIT AMOUNT OF PRUNING TO A MINIMUM NECESSARY TO REMOVE DEAD OR INJURED TWIGS AND BRANCHES. PRUNE IN SUCH A MANNER AS NOT TO CHANGE NATURAL HABIT OR SHAPE OF PLANT. MAKE CUTS FLUSH, LEAVING NO STUBS.
- ALL LANDSCAPE EDGING IS TO BE A 4" X 3/16" PAINTED STEEL EDGING. PLACE EDGING FLUSH WITH GRADE.
- INSTALL SHREDDED HARDWOOD MULCH IN ALL PLANT BEDS AND TREE SAUCERS. PLACE 3"-4" OF MULCH IN ALL PLANT BEDS AND TREE SAUCERS.
- PLANTING BEDS RECEIVING MULCH ARE TO BE FREE OF WEEDS AND GRASS. TREAT BEDS WITH A PRE-EMERGENT HERBICIDE PRIOR TO MULCH PLACEMENT. APPLY IN ACCORDANCE WITH STANDARD TRADE PRACTICE.
- THE CONTRACTOR SHALL PROVIDE ALL WATER, WATERING DEVICES AND LABOR NEEDED TO IRRIGATE PLANT MATERIALS UNTIL ACCEPTANCE OF THE PROJECT'S PLANT MATERIALS. THE CONTRACTOR SHALL SUPPLY ENOUGH WATER TO MAINTAIN THE PLANT'S HEALTHY CONDITION.
- RE-ESTABLISH TURF IN AREAS DISTURBED BY GRADING OR UTILITY TRENCHING IN THE R.O.W.
- REESTABLISH TURF IN ALL AREAS DISTURBED BY THE CONSTRUCTION PROCESS AND WITHIN THE LIMITS OF DISTURBANCE BY SEED, SOD OR PLANNED PLANTING AREAS, AS NOTED ON PLAN.
- REPORT ANY DISCREPANCIES IN THE PLANTING PLAN TO THE OWNER'S REPRESENTATIVE PRIOR TO STARTING CONSTRUCTION.

RECEIVED
Amy Allison, 1/19/2020, 1:44:55 pm

APPROVED
Amy Allison, 1/19/2020, 1:45:00 pm

Owner: Palm Development Partners
Contact: Winston Parks
(615) 674-2130
wparks@winstonwarren.com



LEGAL DESCRIPTION

LOT 2, BLOCK, 1 PIZZA RANCH
OWNER: 3 DL INC.
PIN: 1330802002002130

PLANTING LEGEND

SIDEWALK

LANDSCAPE REQUIREMENTS

LANDSCAPED STREET YARD

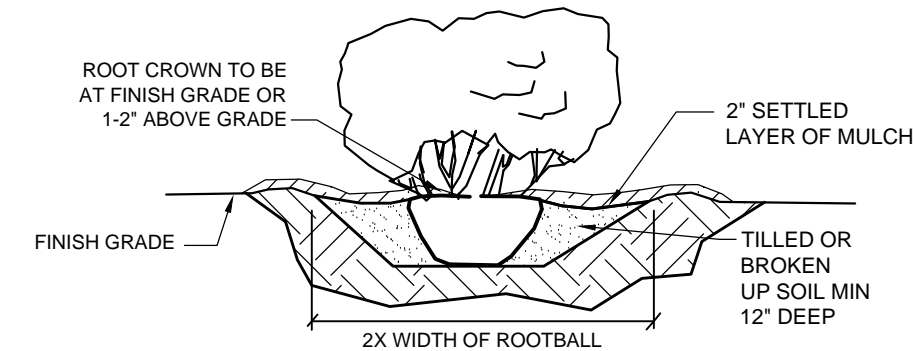
Street Trees:
2 trees planted at 40' intervals

Parking Lot Landscaping:
Recommended, but not required

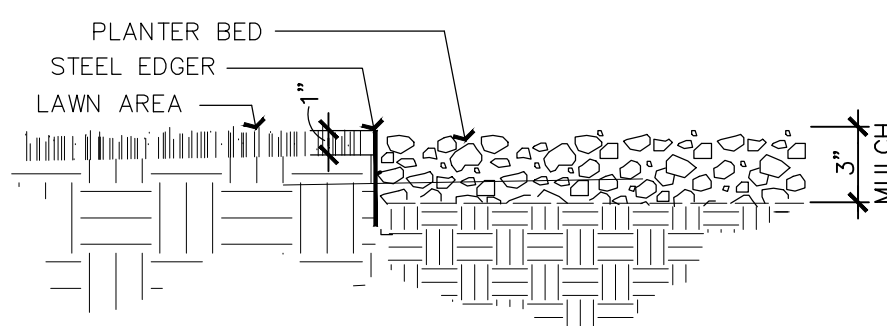
Screening of Trash Containers:
Screened by an architectural wall

Screening of Mechanical Equipment:
Transformer Pads are screened by shrubs & grasses

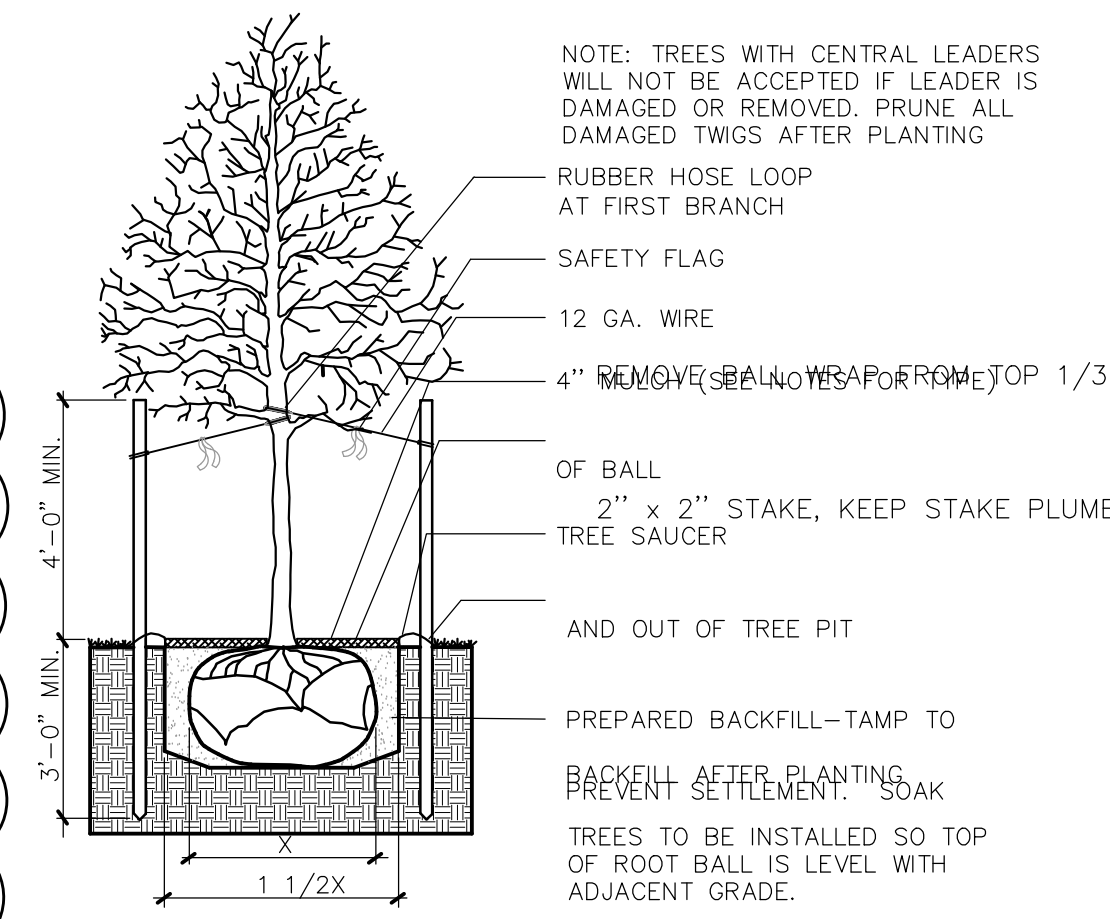
Percentage of undeveloped area covered by landscaping:
915 SF / 4985 SF = 18%



1 SHRUB PLANTING DETAIL
NO SCALE



2 EDGER DETAIL
NO SCALE



3 TREE PLANTING DETAIL
IN TURF AREAS NO SCALE

NOTE: TREES WITH CENTRAL LEADERS WILL NOT BE ACCEPTED IF LEADER IS DAMAGED OR REMOVED. PRUNE ALL DAMAGED TWIGS AFTER PLANTING

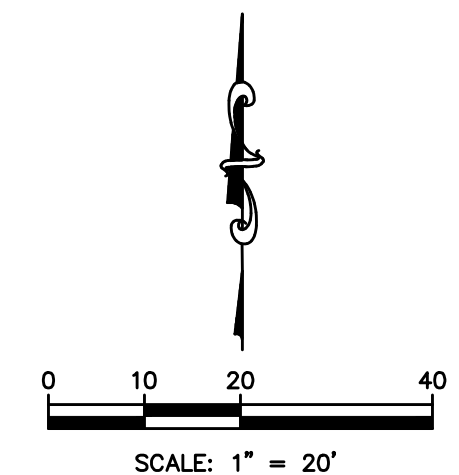
- RUBBER HOSE LOOP AT FIRST BRANCH
- SAFETY FLAG
- 12 GA. WIRE
- 4" REMOVE SEAL NO HESAP FROM TOP 1/3
- OF BALL
- 2" x 2" STAKE, KEEP STAKE PLUMB
- TREE SAUCER
- AND OUT OF TREE PIT
- PREPARED BACKFILL-TAMP TO PREVENT SETTLEMENT. SODAK
- TREES TO BE INSTALLED SO TOP OF ROOT BALL IS LEVEL WITH ADJACENT GRADE.

PLANT SCHEDULE

TAG	QTY.	COMMON NAME	BOTANICAL NAME	SIZE	COND.	REMARKS
		DECIDUOUS TREE				
CP	4	Chinese Pistache	<i>Pistacia chinensis</i>	2" CAL.	B & B	
		EVERGREEN SHRUB				
GCJ	15	Gold Coast Juniper	<i>Juniperus x pfitzeriana 'Aurea Improved'</i>	3 Gal.	Cont.	
ME	10	Manhattan Euonymus	<i>Euonymus kiautschovicus 'Manhattan'</i>	3 Gal.	Cont.	
		NATIVE & ORNAMENTAL GRASSES				
BAG	17	Blonde Ambition Grama Grass	<i>Boutelloua gracilis 'Blonde Ambition'</i>	5" pot	Cont.	
FRG	15	Feather Reed Grass	<i>Calamagrostis x acutifolia 'Karl Foerster'</i>	5" pot	Cont.	

UTILITIES SHOWN REPRESENT THE BEST INFORMATION AVAILABLE FOR DESIGN. ADDITIONAL UTILITIES MAY BE PRESENT ON THIS PROJECT. THE CONTRACTOR SHALL BE RESPONSIBLE FOR DETERMINING THE EXACT LOCATION, DEPTH AND SIZE OF ALL UNDERGROUND UTILITIES PRIOR TO CONSTRUCTION. THE CONTRACTOR SHALL BE LIABLE FOR ANY DAMAGE CAUSED BY THE FAILURE TO DO SO.

THIS PLAN SHEET IS PART OF AN OVERALL KAW VALLEY ENGINEERING PLAN SET FOR THE SPECIFIC IMPROVEMENTS CONTEMPLATED THEREIN. AS SUCH, THE INFORMATION CONTAINED MAY BE LIMITED AND SHOULD ONLY BE INTERPRETED WITHIN THE CONTEXT OF THE COMPLETE PLAN SET.



CHK	CHK
DSN	DSN
REV	DATE
9	9.22.20
REVISION DUE TO SITE CHANGES	DESCRIPTION
Teri Farha, RLA Wichita, KS 620-262-7268 terifarha@cox.net	
OWNER: ARNLUND, BERT E FAMILY LIMITED PARTNERSHIP PIN: 1330801002001020	
200 N. EMPORIA, SUITE 100 WICHITA, KS 67202 PH. (316) 440-4304 FAX (316) 440-4309 www.kawvalley.com www.kveng.com	
KAW VALLEY ENGINEERING	
KAW VALLEY ENGINEERING, INC. IS AUTHORIZED TO OFFER ENGINEERING SERVICES IN THE STATE OF KANSAS UNDER CERTIFICATE OF AUTHORIZATION # E-113. EXPIRES 12/31/18	
XPRESS WELLNESS CLINIC 1808 E. 17TH AVENUE HUTCHINSON, KS	
PROJ. NO. G20-1416	
DESIGNER TRA	DRAWN BY TAF
CFN	1416 SP
SHEET L-1	REV